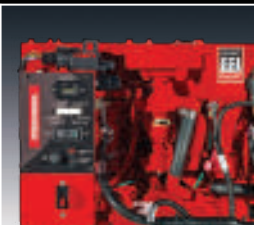


Westerbeke Marine Diesel and Gasoline Generators



D-NET™: The first generators available fully networked to NMEA 2000®

Some luxuries remain exclusive

Westerbeke Marine Diesel Generator Sets

For the Leisure and Professional Boating Industry, Westerbeke produces high quality marine generator sets from 5.5kW up to 29.0kW at 60 Hertz and 5.0kW up to 23.0kW at 50 Hertz.

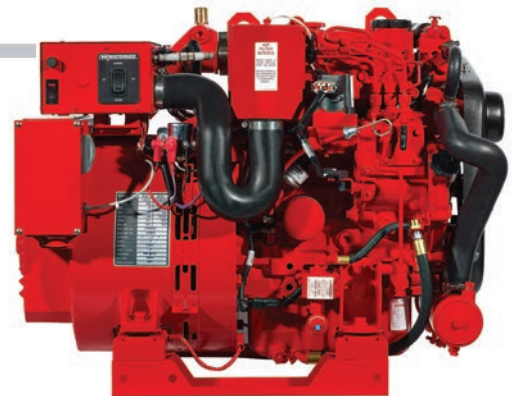
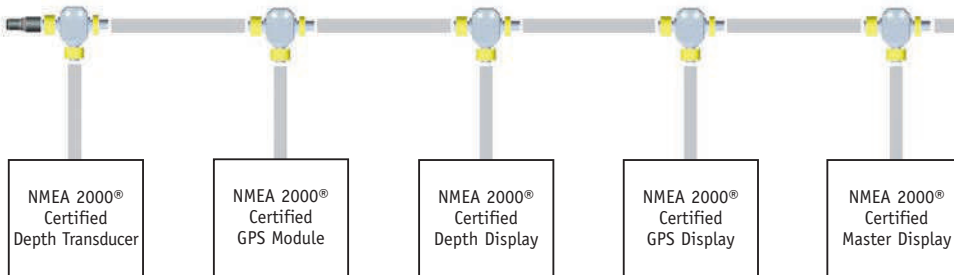
Westerbeke 1800/1500-rpm diesel generators are backed by a 5-year limited warranty. The presence of Westerbeke in over 65 countries around the world provides customers with easy access to parts and technical support.

Established in 1937, Westerbeke is committed to providing its customers with quality products and exceptional after sales support.



D-NET™ ELECTRONIC DIESEL GENERATORS

Sample network with NMEA 2000® certified generator



NMEA 2000® Main Advantages

NMEA 2000® certification allows the Westerbeke generator and multiple displays to communicate via the same digital databus cable at a far greater distance than previously possible. The digital databus cable facilitating communication can also be shared by Westerbeke and other NMEA 2000® certified equipment installed on the vessel. This permits boat builders to significantly reduce both labor and space normally required to run multiple cables throughout the vessel as well as unnecessary weight.



Standard D-NET™ Features

- NMEA 2000® compliant databus communication
- Unit mounted start-stop
- Electronic governing
- Safety shut-downs: overspeed, underspeed, low oil pressure, high exhaust and high coolant temperature
- AC circuit breaker (up to 15.0/12.0kW)
- Field breaker (above 15.0/12.0kW)
- 12V, 50 amp battery charging alternator (40 amp, 22.0/17.0kW)
- Power take-off interface
- Self-bleeding fuel system (up to 15.0/12.0kW)
- Fresh water cooling
- Water injected exhaust elbow
- Raw water pump
- Tuned air intake silencer
- Slow-speed, quiet operation
- Anti-vibration mounts
- Lube oil drain hose and drip tray
- Operators' manual & parts list
- 5-year limited warranty

Optional Equipment

- Remote start-stop(s)
- Sound Guard SST
- Ungrounded electrical system (above 5.5/5.0kW)
- 24V electrical system (above 7.6/5.7kW)
- 24V ungrounded electrical system (above 7.6/5.7kW)
- Keel cooling
- Dry exhaust
- PTO adapter kit (up to 15.0/12.0kW)
- PTO with electric clutch (above 15.0/12.0kW)
- Fuel/water separator
- Hydro-Hush muffler and fittings
- Spare parts kits
- Anti-siphon valve with 1" stainless loop for overboard cooling discharge water
- Ship-to-shore switch
- White paint (standard color red)



Sound Guard SST

Allows full service access to all four sides and top. Features stainless steel base and frame with powder coated aluminum panels providing exceptional corrosion resistance.



Technical Data, D-NET™

| | | NEMA 2000® certified | | | | | | | | | | | | | | | |
|----------------|------|----------------------|----------|----------|----------|----------|----------|-----------|----------|-----------|----------|-----------|-----------|-----------|-----------|-----------|-----------|
| Model | | 5.5 EDCA | 5.0 EDCA | 7.6 EDTA | 5.7 EDTA | 8.0 EDTA | 6.0 EDTA | 10.0 EDTA | 7.5 EDTA | 11.0 EDTA | 8.8 EDTA | 12.5 EDTA | 10.3 EDTA | 15.0 EDTA | 12.0 EDTA | 22.0 EDEA | 17.0 EDEA |
| Output | KW | 5.5 | 5.0 | 7.6 | 5.7 | 8.0 | 6.0 | 10.0 | 7.5 | 11.0 | 8.8 | 12.5 | 10.3 | 15.0 | 12.0 | 22.0 | 17.0 |
| Cylinders | | 3 | | | 3 | | | 3 | | | 3 | | | 4 | | 4 | |
| Speed | RPM | 1800 | 1500 | 1800 | 1500 | 1800 | 1500 | 1800 | 1500 | 1800 | 1500 | 1800 | 1500 | 1800 | 1500 | 1800 | 1500 |
| Voltage | V | 120 | 230 | 120/240 | 230 | 120/240 | 230 | 120/240 | 230 | 120/240 | 230 | 120/240 | 230 | 120/240 | 230 | 120/240 | 230 |
| Frequency | Hz | 60 | 50 | 60 | 50 | 60 | 50 | 60 | 50 | 60 | 50 | 60 | 50 | 60 | 50 | 60 | 50 |
| Power Factor | | 1.0 | | 1.0 | | 1.0 | | 1.0 | | 1.0 | | 1.0 | | 1.0 | | 1.0 | |
| Standard Phase | | 1 | | 1 | | 1 | | 1 | | 1 | | 1 | | 1 | | 1 | |
| Optional Phase | | No | | No | | No | | 3* | | 3* | | 3* | | 3* | | 3* | |
| Dimensions: | | GEN | W/SST | GEN | W/SST | GEN | W/SST | GEN | W/SST | GEN | W/SST | GEN | W/SST | GEN | W/SST | GEN | W/SST |
| Length | inch | 27.8 | 33.3 | 28.2 | 33.3 | 29.1 | 36.1 | 32.2 | 36.1 | 32.2 | 36.1 | 35.3 | 39.5 | 35.3 | 39.5 | 39.9 | 45.0 |
| Width | inch | 18.5 | 21.1 | 19.0 | 21.1 | 20.0 | 23.2 | 20.5 | 23.2 | 20.5 | 23.2 | 20.5 | 23.2 | 20.5 | 23.2 | 22.4 | 26.0 |
| Height | inch | 20.6 | 22.3 | 21.2 | 22.3 | 24.0 | 25.3 | 24.0 | 25.3 | 24.0 | 25.3 | 24.0 | 25.3 | 24.0 | 25.3 | 25.4 | 27.0 |
| Dry Weight | lbs | 373 | 451 | 407 | 485 | 476 | 566 | 522 | 612 | 522 | 612 | 570 | 664 | 574 | 668 | 829 | 949 |
| Length | mm | 706 | 846 | 717 | 846 | 725 | 917 | 818 | 917 | 818 | 917 | 895 | 1003 | 895 | 1003 | 1015 | 1143 |
| Width | mm | 470 | 536 | 482 | 536 | 508 | 589 | 521 | 589 | 521 | 589 | 521 | 589 | 521 | 589 | 568 | 660 |
| Height | mm | 523 | 566 | 540 | 566 | 609 | 643 | 609 | 643 | 609 | 643 | 610 | 643 | 610 | 643 | 644 | 686 |
| Dry Weight | kg | 169 | 205 | 185 | 220 | 216 | 257 | 237 | 278 | 237 | 278 | 259 | 302 | 260 | 303 | 376 | 430 |

Specifications subject to change without notice. GEN GENERATOR SST with SOUNDGUARD SST

*Contact factory for weight and dimensions at 3 phase.





Technical Data, analogue

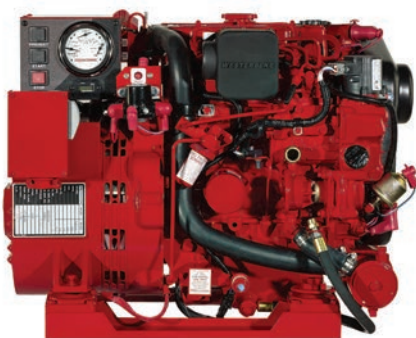
| Model | 5.5 EGCD | 5.0 EGCD | 7.6 EGTD | 5.7 EGTD | 8.0 EGTD | 6.0 EGTD | 10.0 EGTD | 7.5 EGTD | 11.0 EGTD | 8.8 EGTD | 12.5 EGTD | 10.3 EGTD | 15.0 EGTD | 12.0 EGTD | 29.0 EGED | 23.0 EGED |
|-----------------------|----------|----------|----------|----------|----------|----------|-----------|----------|-----------|----------|-----------|-----------|-----------|-----------|-----------|-----------|
| Output kW | 5.5 | 5.0 | 7.6 | 5.7 | 8.0 | 6.0 | 10.0 | 7.5 | 11.0 | 8.8 | 12.5 | 10.3 | 15.0 | 12.0 | 29.0 | 23.0 |
| Cylinders | 3 | | 3 | | 3 | | 3 | | 3 | | 4 | | 4 | | 4 | |
| Speed RPM | 1800 | 1500 | 1800 | 1500 | 1800 | 1500 | 1800 | 1500 | 1800 | 1500 | 1800 | 1500 | 1800 | 1500 | 1800 | 1500 |
| Voltage V | 120 | 230 | 120/240 | 230 | 120/240 | 230 | 120/240 | 230 | 120/240 | 230 | 120/240 | 230 | 120/240 | 230 | 120/240 | 230 |
| Frequency Hz | 60 | 50 | 60 | 50 | 60 | 50 | 60 | 50 | 60 | 50 | 60 | 50 | 60 | 50 | 60 | 50 |
| Power Factor | 1.0 | | 1.0 | | 1.0 | | 1.0 | | 1.0 | | 1.0 | | 1.0 | | 1.0 | |
| Standard Phase | 1 | | 1 | | 1 | | 1 | | 1 | | 1 | | 1 | | 1 | |
| Optional Phase | No | | No | | No | | 3* | | 3* | | 3* | | 3* | | 3* | |
| Dimensions: | GEN | W/SST | GEN | W/SST | GEN | W/SST | GEN | W/SST | GEN | W/SST | GEN | W/SST | GEN | W/SST | GEN | W/SST |
| Length inch | 28.0 | 33.3 | 28.4 | 33.3 | 29.1 | 36.1 | 32.2 | 36.1 | 32.2 | 36.1 | 35.3 | 39.5 | 35.3 | 39.5 | 46.2 | 50.8 |
| Width inch | 18.3 | 21.1 | 19.0 | 21.1 | 20.0 | 23.2 | 20.5 | 23.2 | 20.5 | 23.2 | 20.5 | 23.2 | 20.5 | 23.2 | 22.5 | 27.2 |
| Height inch | 20.9 | 22.3 | 20.5 | 22.3 | 24.0 | 25.3 | 24.0 | 25.3 | 24.0 | 25.3 | 24.0 | 25.3 | 24.0 | 25.3 | 29.3 | 30.8 |
| Dry Weight lbs | 372 | 443 | 406 | 477 | 476 | 559 | 522 | 605 | 522 | 605 | 570 | 657 | 574 | 661 | 1152 | 1302 |
| Length mm | 712 | 846 | 722 | 846 | 739 | 917 | 818 | 917 | 818 | 917 | 895 | 1003 | 895 | 1003 | 1174 | 1291 |
| Width mm | 466 | 536 | 482 | 536 | 508 | 589 | 521 | 589 | 521 | 589 | 521 | 589 | 521 | 589 | 573 | 691 |
| Height mm | 531 | 566 | 521 | 566 | 609 | 643 | 609 | 643 | 609 | 643 | 610 | 643 | 610 | 643 | 745 | 782 |
| Dry Weight kg | 169 | 202 | 184 | 217 | 216 | 253 | 237 | 274 | 237 | 274 | 259 | 299 | 260 | 300 | 523 | 591 |

Specifications subject to change without notice.
*Contact factory for weight and dimensions at 3 phase

GEN GENERATOR SST with SOUNDGUARD SST

Standard Features

- Instrument panel and safety stop switch
- Remote start/stop plug-in connection
- Electronic governing (up to 15.0/12.0kW)
- Electronic voltage regulation (above 15.0/12.0kW)
- Safety shut-downs: overspeed, underspeed, low battery voltage and low oil pressure, high exhaust and high coolant temperature (up to 15.0/12.0kW)
- Safety shut-downs: low oil pressure, high exhaust and high coolant temperature (above 15.0/12.0kW)
- AC circuit breaker (single phase, up to 15.0/12.0kW)
- Field breaker (above 15.0/12.0kW)
- 50 amp battery charging alternator
- Power take-off interface
- Self-bleeding fuel system (up to 15.0/12.0kW)
- "EZ Bleed" fuel system (above 15.0/12.0kW)
- Fresh water cooling
- Water injected exhaust elbow



Optional Equipment

- Dual station instrument panel with senders
- Remote start-stop panels
- Remote lube oil filter kit
- Sound Guard SST
- Ungrounded electrical system (above 5.5/5.0kW)
- 24V electrical system (above 7.6/5.7kW)
- 24V ungrounded electrical system (above 7.6/5.7kW)
- Keel cooling
- Dry exhaust
- PTO adapter kit (up to 15.0/12.0kW)
- PTO with electric clutch (above 15.0/12.0kW)
- Hydro-hush muffler and fittings
- Fuel/water separator
- Anti-siphon valve with 1 inch stainless loop
- Ship-to-shore switch
- Spare parts kit and hose kit
- White paint (standard color red)

Sound Guard **SST**

Models (60/50 Hz)

SST Part #

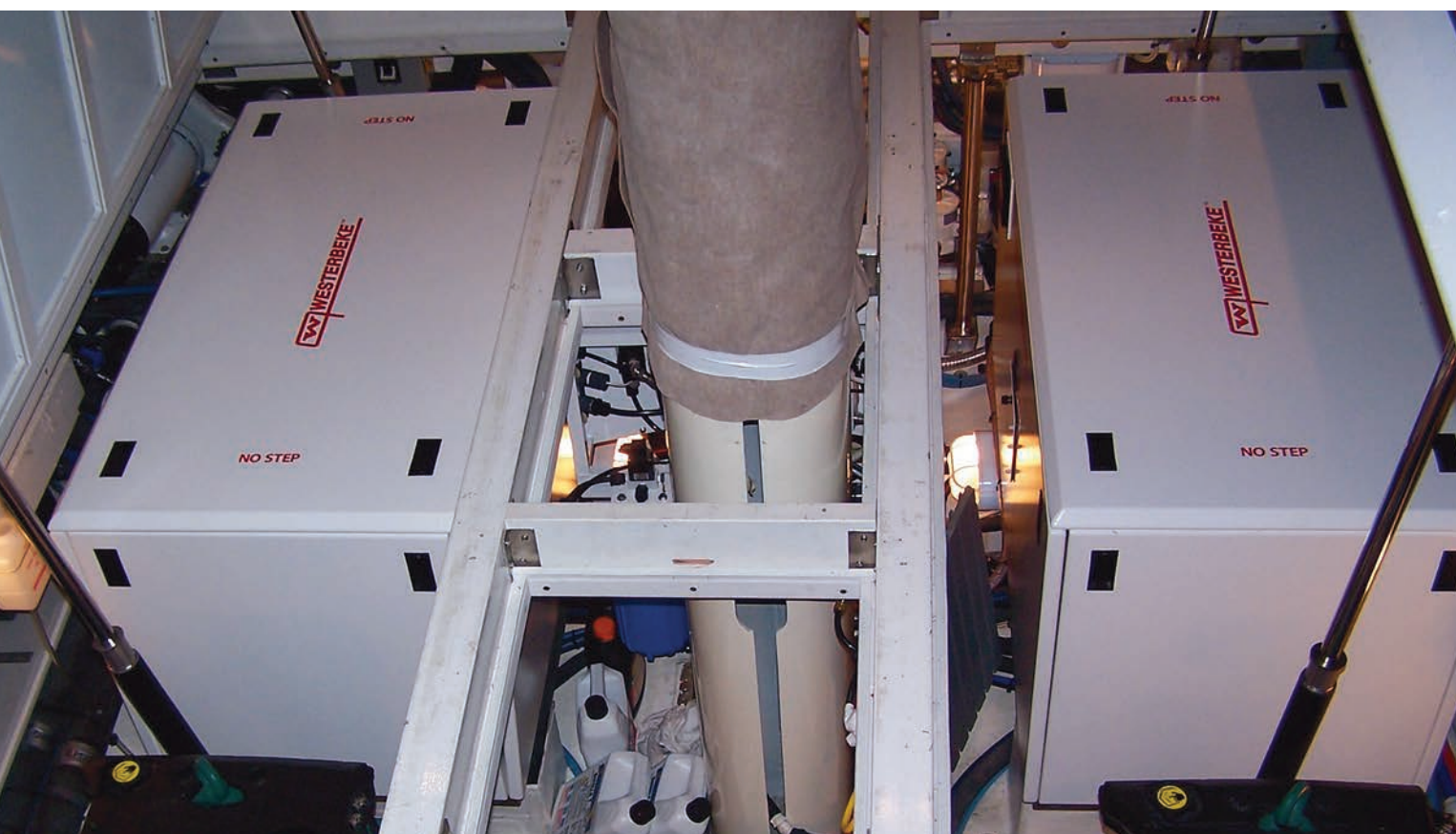
Dimensions (L x W x H)

Weight



| | | | |
|--|-------|---|----------------------|
| 5.5/5.0 EGCD 7.6/5.7 EGTD | 49484 | 33.3 x 21.1 x 22.3 in. 846 x 536 x 566 mm | 71 lbs. 33 kilos |
| 5.5/5.0 EDCA 7.6/5.7 EDTA | 52709 | | 78 lbs. 36 kilos |
| 8.0/6.0 EGTD 10.0/7.5 EGTD 11.0/8.8 EGTD | 49483 | 36.1 x 23.2 x 25.3 in. 917 x 589 x 643 mm | 83 lbs. 37 kilos |
| 8.0/6.0 EDTA 10.0/7.5 EDTA 11.0/8.8 EDTA | 53462 | | 90 lbs. 41 kilos |
| 12.5/10.3 EGTD 15.0/12.0 EGTD | 49527 | 39.5 x 23.2 x 25.3 in. 1003 x 589 x 643 mm | 87 lbs. 40 kilos |
| 12.5/10.3 EDTA 15.0/12.0 EDTA | 53463 | | 94 lbs. 43 kilos |
| 22.0/17.0 EDEA* | 54442 | 45.0 x 26.0 x 27.0 in. 1143 x 660 x 686 mm | 120 lbs. 54 kilos |
| *Use PN 53070 for optional 3-phase units only | | | |
| 29.0/23.0 EGED | 53070 | 50.7 x 27.2 x 30.8 in. 1288 x 691 x 782 mm | 150 lbs. 68 kilos |

Specifications subject to change without notice.





Westerbeke Marine Gasoline Generator Sets with Multiport EFI technology

Pleasure, power and peace of mind

Gasoline



Providing all the comforts of home for your small pleasure craft or houseboat, Westerbeke gasoline generators are world renowned among houseboat rental fleets and small craft owners' alike.

3.5 MCGB Standard Features

- Simple, "one touch" start/stop control panel with running hour meter and warning annunciation
- Multiport EFI
- Water-cooled, returnless fuel system
- Electronic governing
- Safety warnings and shut-downs — overspeed, underspeed, low oil pressure, high exhaust and coolant temperature
- Fresh water cooling and coolant recovery tank
- A.C. circuit breaker
- 5 amp battery charger
- Water injected exhaust elbow
- Belt-driven raw water pump
- Vibration isolators
- Lube oil drain hose
- Operators' manual and parts list
- Meets applicable U.S.C.G. regulations

MULTIPOINT EFI AND RETURNLESS FUEL SYSTEM

MCGB models feature sequential multiport electronic fuel injection (MPI). MPI provide optimum fuel efficiency, easy starting, improved reliability and reduced emissions. In conjunction with MPI, electronic speed control maintains the engine at a constant speed (precise frequency regulation) and virtually eliminates "bogging down" when load is applied. A water cooled returnless fuel system aids in the prevention of vapor lock for improved performance in high ambient temperatures.

5.0-9.5 MCGB, 60Hz (4.2-7.6 MCGB, 50Hz)

Standard Features

- Simple, "one touch" start/stop control panel with running hour meter and warning annunciation
- Multiport EFI
- Water-cooled, returnless fuel system
- Electronic governing
- Safety warnings and shut-downs — overspeed, underspeed, low oil pressure, high exhaust and coolant temperature
- Fresh water cooling and coolant recovery tank
- Field convertible to 50 or 60Hz
- A.C. circuit breaker
- 10 amp battery charger
- Water injected exhaust elbow
- Belt-driven raw water pump
- Vibration isolators
- Remote lube oil filter
- Lube oil drain hose
- Belt guard
- Operators' manual and parts list
- Meets applicable U.S.C.G. regulations



Optional Equipment

- Remote start-stop panel with warning annunciation
- 15 or 30 foot extension harness
- 90 degree water injected exhaust elbow (5.0/4.2-9.5/7.6kW)
- Venclosure (5.0/4.2-9.5/7.6kW)
- Drip shield (3.5kW)
- Hydro-Hush muffler and fittings
- Anti-siphon valve with stainless loop
- Ship-shore switch
- Spare parts kit
- Hose kit
- White paint (red standard color)

Venclosure

5.0/4.2-7.5/6.2 MCGB

Length: 30.3 in. (768 mm)
 Width: 21.6 in. (550 mm)
 Height: 18.8 in. (477 mm)
 Weight: 20 lbs. (9 kg)

9.5/7.6 MCGB

Length: 34.0 in. (863 mm)
 Width: 22.6 in. (573 mm)
 Height: 19.5 in. (494 mm)
 Weight: 30 lbs. (14 kg)



NOTE: When installed inside a Venclosure, the generator set is only offered with white paint. A Venclosure is only available installed at the factory.

The Venclosure (right) is shown with optional 90 degree "REARX" exhaust elbow.



Technical Data

MULTIPOINT EFI GASOLINE (PETROL) GENERATORS

| Model | | 3.5 MCGB* | 5.0 MCGB | 4.2 MCGB | 7.5 MCGB | 6.2 MCGB | 9.5 MCGB | 7.6 MCGB | 15.0 MEG | 12.0 MEG | 20.0 MEG | 16.0 MEG | 23.0 MEG | 18.0 MEG |
|-----------------------|-------------|-----------|---------------|----------|---------------|----------|---------------|----------|----------|----------|----------|----------|----------|----------|
| Output | kW | 3.5 | 5.0 | 4.2 | 7.5 | 6.2 | 9.5 | 7.6 | 15.0 | 12.0 | 20.0 | 16.0 | 23.0 | 18.0 |
| Cylinders | | 2 | 3 | | 3 | | 4 | | 4 | | 4 | | 4 | |
| Speed | RPM | 2500 | 1800 | 1500 | 1800 | 1500 | 1800 | 1500 | 1800 | 1500 | 1800 | 1500 | 1800 | 1500 |
| Voltage | V | 120/230 | 120 | 230 | 120 | 230 | 120/240 | 230 | 120/240 | 230 | 120/240 | 230 | 120/240 | 230 |
| Frequency | Hz | 60/50 | 60 | 50 | 60 | 50 | 60 | 50 | 60 | 50 | 60 | 50 | 60 | 50 |
| Power Factor | | 1 | 1 | | 1 | | 1 | | 1 | | 1 | | 1 | |
| Standard Phase | | 1 | 1 | | 1 | | 1 | | 1 | | 1 | | 1 | |
| Dimensions: | | | | | | | | | | | | | | |
| Length | inch | 26.6 | 29.1 (26.4)** | | 30.4 (27.7)** | | 33.9 (31.5)** | | 37.5 | | 42.3 | | 42.3 | |
| Width | inch | 15.8 | 18.4 (19.2)** | | 18.4 (19.2)** | | 19.8 (20.3)** | | 24.5 | | 24.5 | | 24.5 | |
| Height | inch | 15.0 | 17.9 (18.1)** | | 17.9 (18.1)** | | 18.3 (18.3)** | | 27.8 | | 27.8 | | 27.8 | |
| Dry Weight | lbs | 226 | 344 | | 385 | | 445 | | 621 | | 741 | | 771 | |
| Length | mm | 675 | 740 (672)** | | 771 (703)** | | 861 (799)** | | 952 | | 1074 | | 1074 | |
| Width | mm | 402 | 468 (489)** | | 468 (489)** | | 502 (517)** | | 622 | | 622 | | 622 | |
| Height | mm | 382 | 456 (459)** | | 456 (459)** | | 466 (466)** | | 707 | | 707 | | 707 | |
| Dry Weight | kg | 102 | 156 | | 175 | | 201.9 | | 282 | | 336 | | 350 | |

*3.5 MCGB not field convertible.

**with optional 90° exhaust

Specifications subject to change without notice

"Houseboat Series"

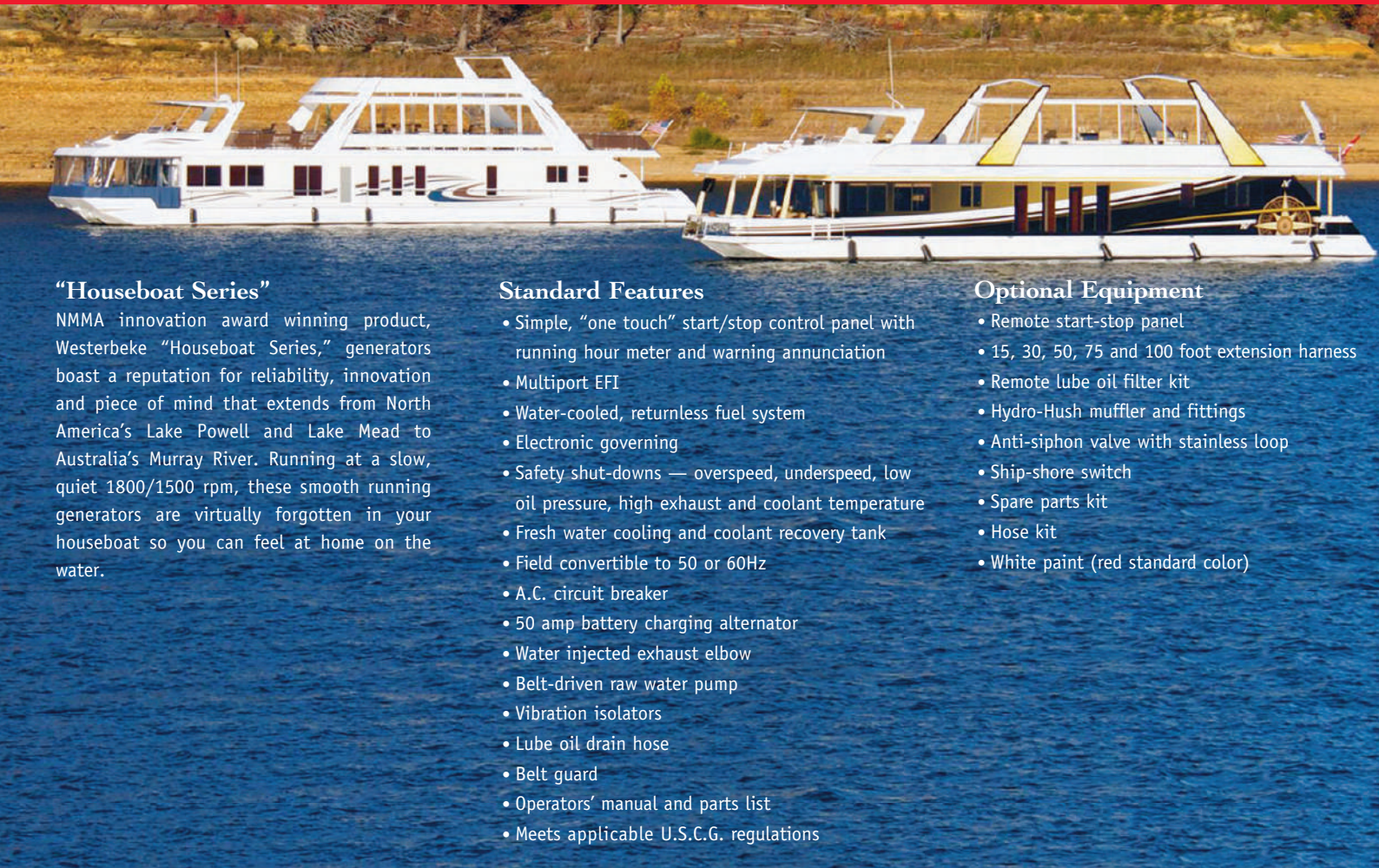
NMMA innovation award winning product, Westerbeke "Houseboat Series," generators boast a reputation for reliability, innovation and piece of mind that extends from North America's Lake Powell and Lake Mead to Australia's Murray River. Running at a slow, quiet 1800/1500 rpm, these smooth running generators are virtually forgotten in your houseboat so you can feel at home on the water.

Standard Features

- Simple, "one touch" start/stop control panel with running hour meter and warning annunciation
- Multipoint EFI
- Water-cooled, returnless fuel system
- Electronic governing
- Safety shut-downs — overspeed, underspeed, low oil pressure, high exhaust and coolant temperature
- Fresh water cooling and coolant recovery tank
- Field convertible to 50 or 60Hz
- A.C. circuit breaker
- 50 amp battery charging alternator
- Water injected exhaust elbow
- Belt-driven raw water pump
- Vibration isolators
- Lube oil drain hose
- Belt guard
- Operators' manual and parts list
- Meets applicable U.S.C.G. regulations

Optional Equipment

- Remote start-stop panel
- 15, 30, 50, 75 and 100 foot extension harness
- Remote lube oil filter kit
- Hydro-Hush muffler and fittings
- Anti-siphon valve with stainless loop
- Ship-shore switch
- Spare parts kit
- Hose kit
- White paint (red standard color)



Powering the marine industry for over 85 years.



NMMA Innovation Award Winner Two Consecutive Years



WESTERBEKE™
WESTERBEKE CORPORATION • MYLES STANDISH INDUSTRIAL PARK
TEL: (508) 823-7677 • FAX: (508) 884-9688 • Website: www.westerbeke.com

